

(1) (2)
SMR Federal
Code Stock
Number

(3)
DESCRIPTION

TM9-2320-211-34P

(4) (5) (6)
UNIT Qty 10-day
of inc. allowance
meas in
Unit

(7)
allowance

(8) (9) (10)
alw maint
per alw

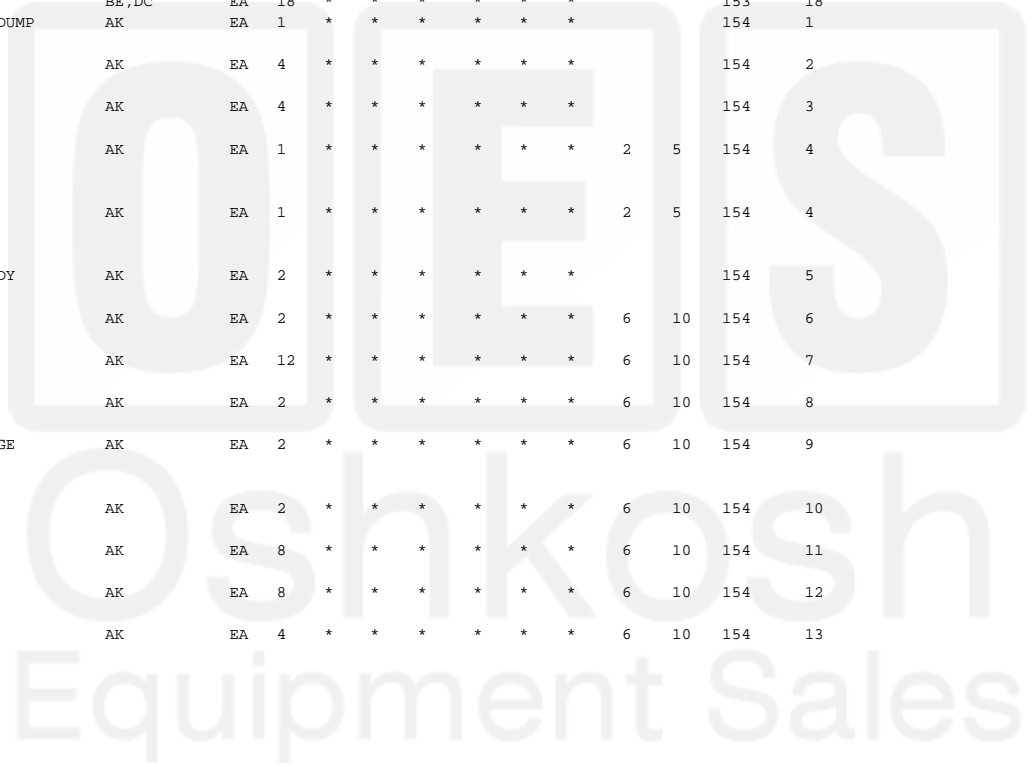
100 per (a) (b)
equip 100 Figure Item
cnt- equip No. No.

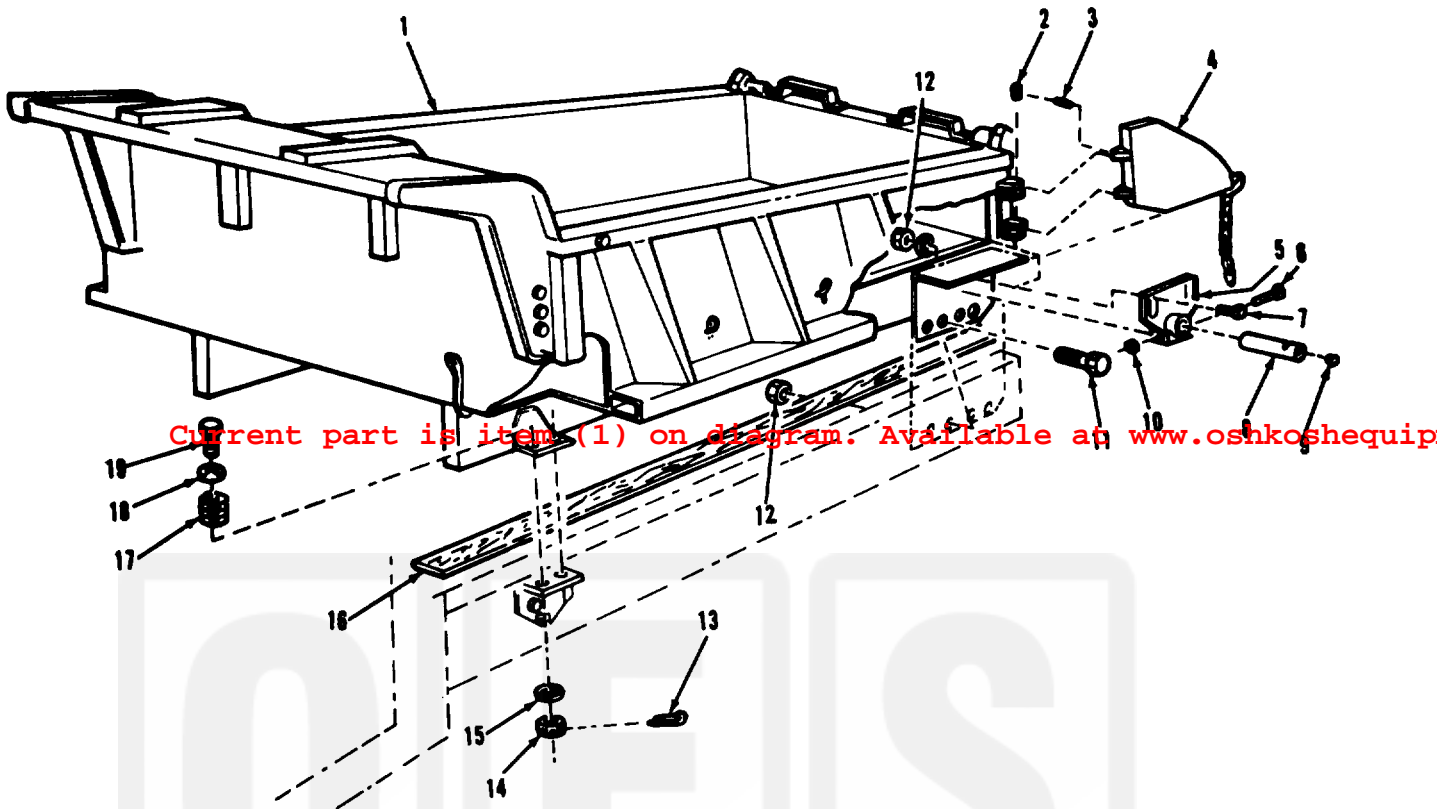
Reference Number & Mfr. Code

Usable On Code

(a) (b) (c) (a) (b) (c)
1-20 21-5(51-10(1-20 21-5(51-10(gcy

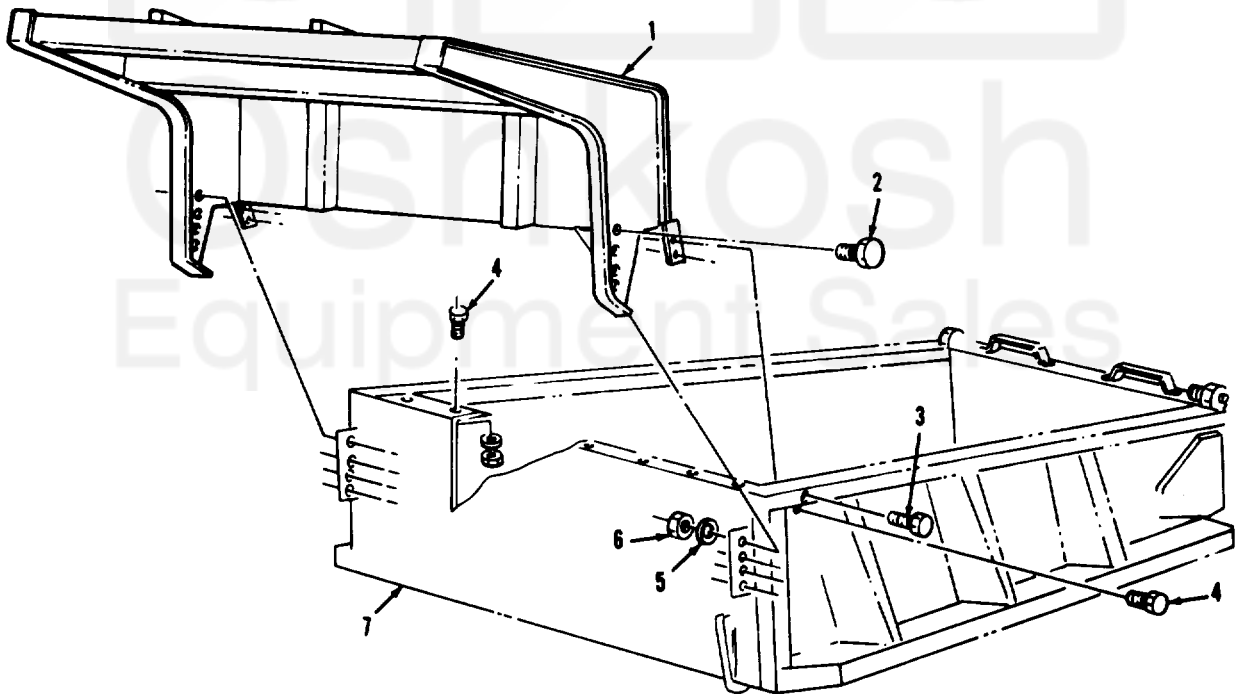
Reference Number & Mfr. Code	Usable On Code	(a)	(b)	(c)	(a)	(b)	(c)	cnt-	equip	No.	(b)	Item
1810-CARGO AMD DUMP BODY-CONTINUED												
P-F 2510-377-48 SHAFT: 8902-31-4 (81336)	EA	4	*	*	*	*	*	2	5	153	13	
P-F 5315-825-37 PIN: MS35671-58 (96906)	EA	34	*	*	*	*	*	6	10	153	14	
P-F 5315-471-32 KEY,WOODRUFF: LOCK LEVER SHAFT 8902-24-15 (81336)	EA	6	*	*	*	*	*	6	10	153	15	
P-F 5305-207-45 SCREW,MACHINE:LOCK LEVER	BE,DC	EA	6	*	*	*	*	6	10	153	16	
P-F 5310-012-03 WASHER,PLAIN: LOCK LEVER	BE,DC	EA	6	*	*	*	*	6	10	153	17	
P-F 5315-087-28 PIN: LATCH	BE,DC	EA	18	*	*	*	*			153	18	
X2-F BODY AND HOIST ASSEMBLY:DUMP 116088806 (19207)	AK	EA	1	*	*	*	*			154	1	
X2-F PIN: 8758706 (19207)	AK	EA	4	*	*	*	*			154	2	
X2-F PIN: MS35627-44 (96906)	AK	EA	4	*	*	*	*			154	3	
P-F 2510-177-78 WING,TAILGATE,DUMP,BODY: RIGHT HAND 8758628 (19207)	AK	EA	1	*	*	*	*	2	5	154	4	
P-F 2510-762-45 WING,TAILGATE DUMP BODY: LEFT HAND 8758629 (19207)	AK	EA	1	*	*	*	*	2	5	154	4	
X2-F BRACKET: HINGE SWIVEL BODY 8758705 (19207)	AK	EA	2	*	*	*	*			154	5	
P-F 5305-269-28 SCREW,CAP,HEXAGON HEAD: MS90726-74 (96906)	AK	EA	2	*	*	*	*	6	10	154	6	
P-F 5305-725-41 SCREW,CAP,HEXAGON HEAD: MS90726-164 (96906)	AK	EA	12	*	*	*	*	6	10	154	7	
P-F 5315-740-90 PIN:HINGE BRACKET 74090945 (19207)	AK	EA	2	*	*	*	*	6	10	154	8	
P-F 4730-050-42 FITTING,LUBRICATION: HINGE BRACKET PIN MS15003-1 (96906)	AK	EA	2	*	*	*	*	6	10	154	9	
P-F 5310-982-49 NUT,SELF-LOCKING: MS21045-6 (96906)	AK	EA	2	*	*	*	*	6	10	154	10	
P-F 5305-725-41 SCREW,CAP,HEXAGON HEAD: MS90726-163 (96906)	AK	EA	8	*	*	*	*	6	10	154	11	
P-F 5310-982-50 NUT,SELF-LOCKING: MS21045-10 (96906)	AK	EA	8	*	*	*	*	6	10	154	12	
P-F 5315-013-72 PIN: MS24665-423 (96906)	AK	EA	4	*	*	*	*	6	10	154	13	





AT 47286

Figure 154. Dump truck body and related parts.



AT 28184

Figure 155. Dump truck shield assembly.